

# 16 • POETRY FOLDER

**AIM:** To make a class collection of poems and drawings, and present them in a folder.

**PREPARATION:** I made the folder for all the children's work.



Allow half a morning for a class visit and two 1½-hour sessions for writing and drawing.

## How to use this project

Children visit a park, garden or backyard and collect, sketch and make notes about what catches their eye (seeds, birds, insects, trees). Ask them to think about ways to describe an object — how it feels, smells or looks. Does it remind them of something else? Back in the classroom, children make a list of plant and animal life, then use their work to write a short poem. Children draw a small margin around a sheet of letter paper and with the paper arranged landscape, lay out the poem with a drawing of the object. The finished sheets are collated in the folder.

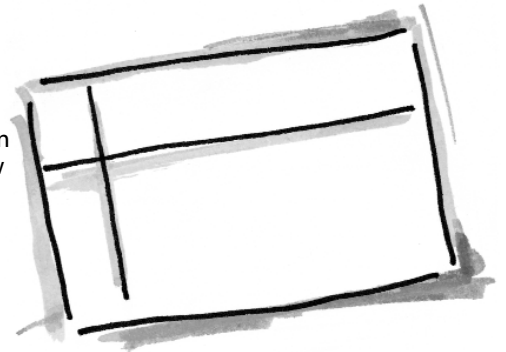


This poetry folder contains another, smaller folder inside, with the sides cut down. The inner folder frames the work inside.

## How to make the folder

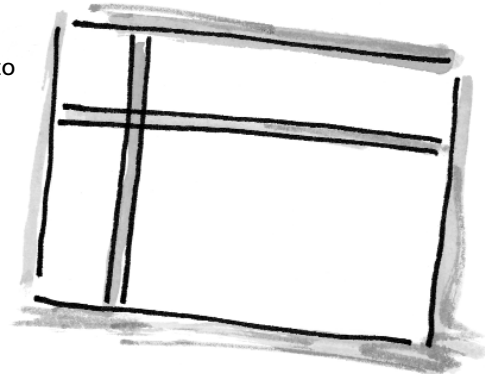
1

Using large cartridge paper or thin bristol board, draw a line 13 cm (5 in.) from the left edge and another 9 cm (3.5 in.) from the top edge.



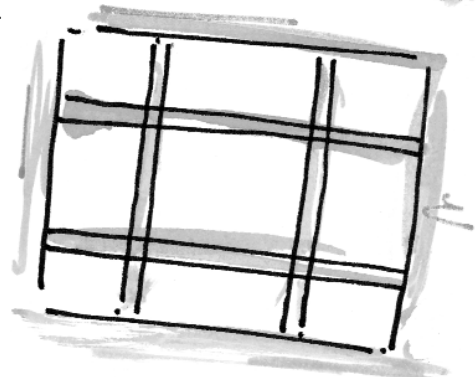
2

Draw a margin to the right of the first line and below the second.

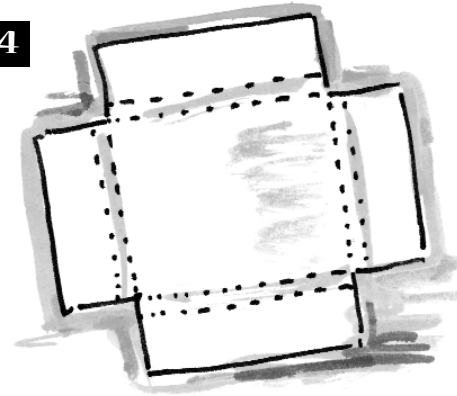


3

Turn the paper round and repeat.



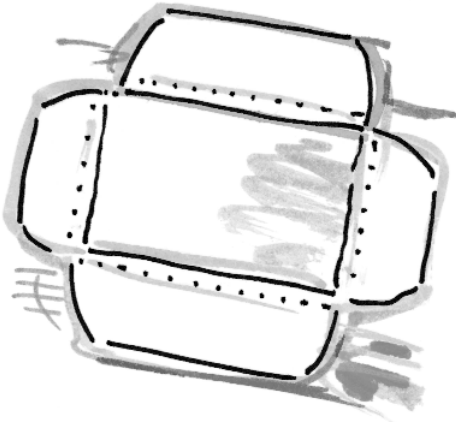
4



Cut out the corner panels.

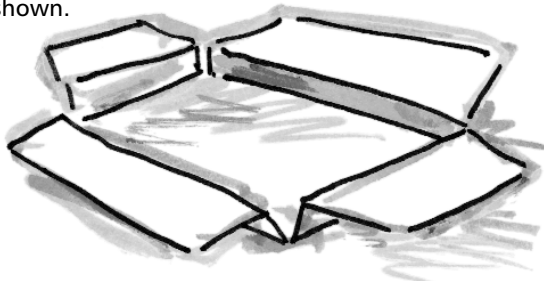
5

Slightly taper the edges of the flaps. Use a ruler and a craft knife to gently score all the lines.



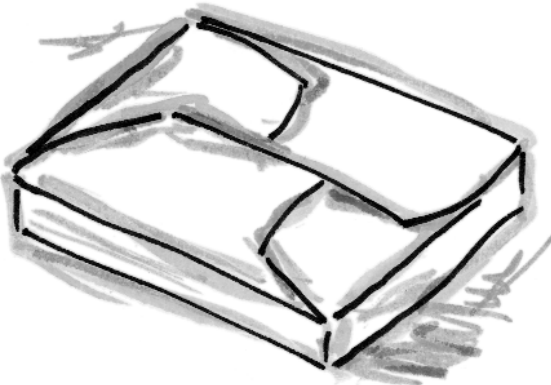
6

Fold as shown.



7

Interlock the cover flaps to complete the folder.



### MORE IDEAS

## Class Display

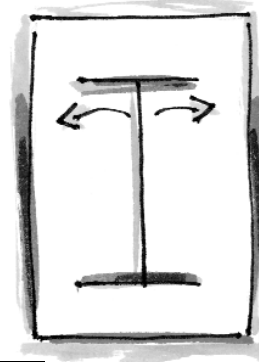
The advantage of removable pages is that they can be mounted as a wall display or passed around the class so that every child can examine one.

### DESIGN TIP

● Use quality paper, perhaps tinted or textured, to encourage children to produce quality work.

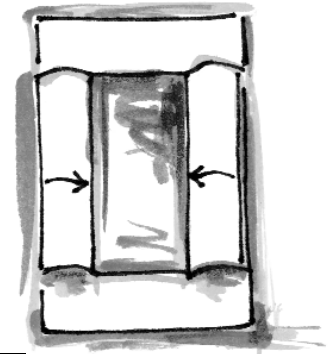
## How to make a mount

This raised mount can be used to display work from the poetry folder.



1

Use a craft knife to cut cartridge paper as shown.



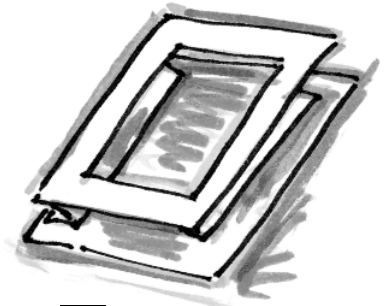
2

Fold the central panels so that the edges touch the outer edges of the frame.



3

Fold in the edges of the two panels to the edge of the window.



4

Glue the bottom edges of the folded panels to a base.

5

Display the work inside the window.

